



World Class Manufacturing



Mahindra engines are manufactured at the state-of-the-art facilities located in Chakan near Pune & Nagpur.

These manufacturing facilities are equipped with:

- Fully automated, controlled environment engine assembly
- Conforms to latest certifications and quality standards
- Quality control systems to maintain highest level of engine quality standards

Engineering Capabilities and Facilities:

- Dedicated R&D set-up at Mahindra Reserch Valley (MRV) Chennai
- New rating developments
- In-house engine and genset design capability
- Modern equipments & software for design development and upgradation of engines, acoustic enclosure systems and control.
- Test cells for R&D testing.

Peace of mind service

Powerol sales & service touch points are available across the length & breadth of our country to provide Installation, Commissioning and after sales support. Over 2000 trained technicians are available at these centres for providing doorstep service. All the outlets are well equipped with the necessary spares. So wherever you are, we are always near to you.

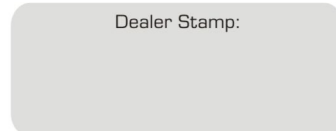
Support is just a call away

Our customer care centre is equipped with the latest software for monitoring & time bound escalation till closure of the complaints. To make it simpler for our customers, a common Toll free no. is available for both sales and service support.



Mahindra & Mahindra Ltd.,
Powerol Business, Powerol Building,
Gate No.2, Akurli Road, Kandivali (E),
Mumbai - 400101.

Dealer Stamp:



OCT-19



Mahindra
Rise.

powerol
by Mahindra

India's first* gas powered genset from Mahindra Powerol

Presenting
20 to 125 kVA
Gas Genset



*CPCB Approved

Product images shown are for representation purpose only

ABOUT POWEROL

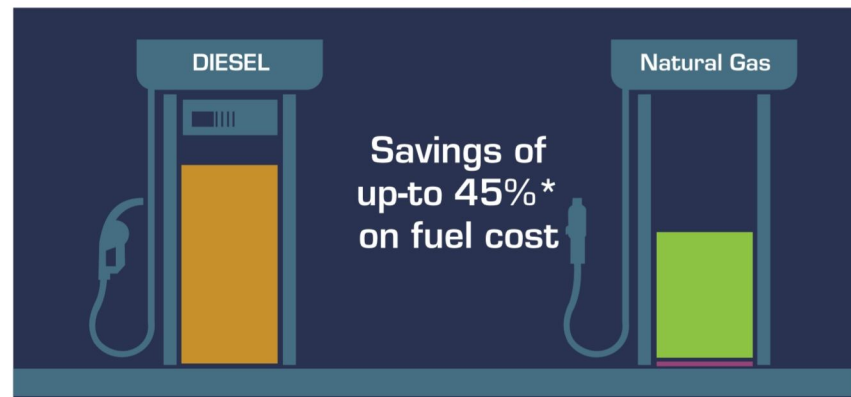
In 2001, Mahindra and Mahindra entered into the field of power generation through its engines under the brand name Mahindra Powerol that are propelling Diesel Generating Sets from 5 kVA to 625 kVA. Mahindra Powerol, known for its fuel efficiency and quick customer response is trusted by telecom & retail customers.

Within short span of time, Mahindra Powerol has garnered immense customer trust which shows its level of commitment and customer centric approach. Presently, its more than 400,000 gensets are powering different industries and applications in Indian and overseas market. Mahindra Powerol through its technology & service has taken a deep stride in the engine and genset industry. In a little over a decade, it has also expanded its footprint in South East Asia, Middle East and Africa.

Gas Power Solutions

Mahindra, with its core engineering strengths and its commitment to contribute towards cleaner environment, has developed India's first ever gas powered genset compliant to CPCB II norms.

Lowest operating cost

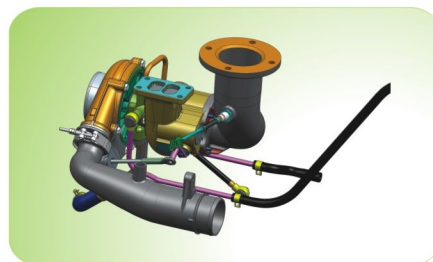


*Actual saving depends on present market prices of HSD and NG

Benefits of Mahindra Powerol Gas Genset



Technology



Water Cooled Turbocharger for maximum power output



Dump valve for improved Block loading

Technical Specifications

Genset Specification				
Genset Rating (kVA)	20	25	100	125
Duty (Standby/ Prime)	Prime	Prime	Prime	Prime
Power Rating @ 100% kWe (in KW)	16	20	80	100
No. of Phases	1 ph / 3 ph	1 ph / 3 ph	3 phase	3 phase
Output Voltage (V)	230/415	230/415	415	415
Power Factor (lagging)	0.8	0.8	0.8	0.8
Current (A)	87/27.8	108.7/34.8	139	174
Frequency (Hz) & RPM	50/1500	50/1500	50/1500	50/1500
Governing Class	G2 as per ISO 8528 part 5			
Genset dimensions* (L x W x H) in mm	2285 X 1030 X 1255	2285 X 1030 X 1255	3750 x 1300 x 1700	3750 x 1300 x 1700
Genset weight (kg)	857	865	2210	2250
Engine Specification				
Make	Mahindra	Mahindra	Mahindra	Mahindra
Aspiration	NA	NA	TCI	TCI
No. of cylinders	4	4	6	6
Bore x Stroke (mm)	88.9 x 101.6	88.9 x 101.6	105 x 137	105 x 137
Displacement (cc)	2523	2523	7118	7118
Fuel consumption @ 75% load (kg/hr) **	3.6	4.0	16	20
Fuel consumption @ 100% load (kg/hr)**	4.4	5.0	20	25
Starting system	12 V DC Electrical	12 V DC Electrical	24 V DC Electrical	24 V DC Electrical
Lube oil specification	Maximile CNG Plus	Maximile CNG Plus	Maximile CNG Plus	Maximile CNG Plus
Total lubrication system capacity	7 Ltr	7 Ltr	20.2 Ltr	20.2 Ltr
Lube oil consumption @ full load ^s	0.15% of FC			
Lube oil change period (hrs.)	500	500	500	500
Radiator coolant capacity (liter)	10	10	24	24
Alternator Specification				
Make	CG / LS			
Enclosure Type	IP 23			
Voltage regulation	+/- 1% with 4% engine Governing			
Class of insulation	Class H			
Maximum Unbalanced Load across Phases	25%			

Above specifications are subject to change without notice due to continuous technical developments.

*A tolerance value of +5% will be applicable on declared power values.

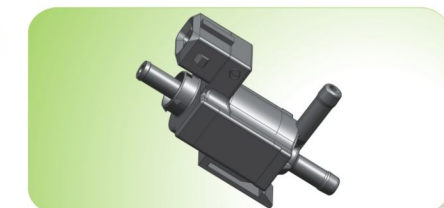
**Genset Dimensions are Excluding silencer.

**A tolerance of +5% shall be applicable on fuel consumption values on account of product to product variation due to engine & +3% of tolerance due to alternator product to product variation.

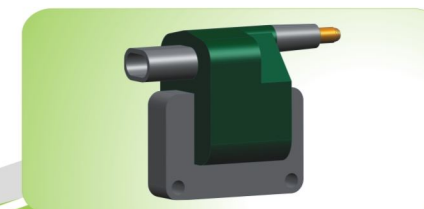
Certified NG Fuel System components



Zero Pressure regulator



Fuel Control Valve



High Tension Ignition Coil



Gas Air Mixer